

TINGKATAN 2

BAB 13

Praktis Sumatif

Bahagian A

- 1 Kebarangkalian guli kuning

$$= \frac{3}{5+3+x} = \frac{3}{10}$$

$$8+x=10$$

$$x=2$$

Jawapan: A

- 2 Kebarangkalian bukan kidal = $1 - 0.35 = 0.65$

$$\text{Bilangan murid} = 0.65 \times 40 = 26$$

Jawapan: C

- 3 $A = 1, 2, 4, 8$

$$P(A) = \frac{4}{10} = 0.4$$

$$P(A') = 1 - 0.4 = 0.6$$

Jawapan: C

- 4 Bilangan kad bukan hijau dan berlabel A = 1

$$\text{Kebarangkalian} = \frac{1}{7+1+3+5} = \frac{1}{16}$$

Jawapan: B

x	1	2	3	4
y	4	3	2	1
x+y	5	5	5	5

Pilihan yang mungkin = $\{(1, 4), (2, 3), (3, 2), (4, 1)\}$

Kebarangkalian x adalah 1 ialah $\frac{1}{4}$

Jawapan: B

- 6 $p = 1 - \frac{1}{4} - \frac{2}{3} = \frac{1}{12}$

Jawapan: D

- 7 $1 - 0.55 = 0.45$

Jawapan: B

- 8 Hasil tambah adalah genap = $\{(6, 2), (9, 3), (9, 5)\}$

$$p = \frac{3}{6} = 0.5$$

Jawapan: D

- 9 $P(\text{lelaki}) = \frac{(38-20)+4}{38+4}$
 $= \frac{22}{42}$
 $= \frac{11}{21}$

Jawapan: C

- 10 $\text{mod} = 46 - 50 \text{ kg}$

$$\begin{aligned} \text{Kebarangkalian} &= \frac{28}{6+28+10+16} \\ &= \frac{28}{60} \\ &= \frac{7}{15} \end{aligned}$$

Jawapan: B

Bahagian B

- 1 (a) {Bahasa Inggeris, Pendidikan Seni, Sains}

$$\begin{aligned} \text{(b) (i) } P(\text{Pendidikan Seni}) &= \frac{6}{4+6+5} \\ &= \frac{6}{15} \\ &= \frac{2}{5} \end{aligned}$$

$$\begin{aligned} \text{(ii) } P(\text{bukan buku Sains}) &= \frac{4+6}{15} \\ &= \frac{10}{15} \\ &= \frac{2}{3} \end{aligned}$$

$$\text{(iii) } P(\text{Bahasa Melayu}) = 0$$

Bahagian C

- 1 (a) Ruang sampel = $\{(2, 2), (2, 3), (2, 5), (3, 2), (3, 3), (3, 5), (5, 2), (5, 3), (5, 5)\}$

- (b) (i) $n = 9$

$$P(\text{Jumlah skor ialah } 5) = \frac{2}{9}$$

- (ii) $\frac{1}{9}$

- (iii) skor sama = $\{(2, 2), (3, 3), (5, 5)\}$

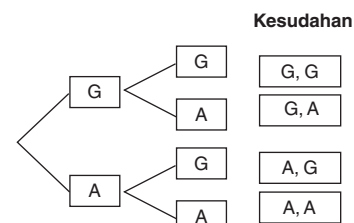
$$P(\text{skor sama}) = \frac{3}{9} = \frac{1}{3}$$

- (iv) $P(\text{skor berbeza})$

$$= 1 - P(\text{skor sama})$$

$$= 1 - \frac{1}{3} = \frac{2}{3}$$

- (c) (i)



Duit syiling 1 Duit syiling 2

Ruang sampel, $S = \{(G, G), (G, A), (A, G), (A, A)\}$

- (ii) Kebarangkalian mendapat sekurang-kurangnya satu gambar
 $= \frac{3}{4} = 0.75$